

Cell Membrane

Location: Surrounds the animal cell and is the inside wall of the plant cell

Function: Controls movement and is a boundary that provides a limited amount of support

Cell Wall

Location: Surrounds the plant cell; does not exist in an animal cell

Function: Gives support and shape to cell

Chloroplasts

Location: Distributed throughout the cytoplasm; found only in plant cells

Function: Manufacture food in the cell by photosynthesis

Chromosomes

Location: In the nucleus

Function: Contain the code that controls the cell and they transmit heredity characteristics

Cytoplasm

Location: A jellylike material found throughout the cell

Function: Chemical reactions within the cell take place in the cytoplasm

Endoplasmic Reticulum *

Location: Distributed throughout the cytoplasm

Function: Synthesizes enzymes involved in the process of respiration

Golgi Bodies *

Location: In the cytoplasm

Function: Stores and releases chemicals in the cell

Mitochondria *

Location: In the cytoplasm

Function: Releases most of the energy from digested foods required by the cell

Nuclear Membrane

Location: Surrounds nucleus

Function: Allows certain substances to pass between the nucleus and the rest of the cell

Nucleus

Location: Found near the center of the cell

Function: Controls cell activities

Ribosomes *

Location: On endoplasmic reticulum and in the cytoplasm

Function: Produce protein within the cell

Vacuole

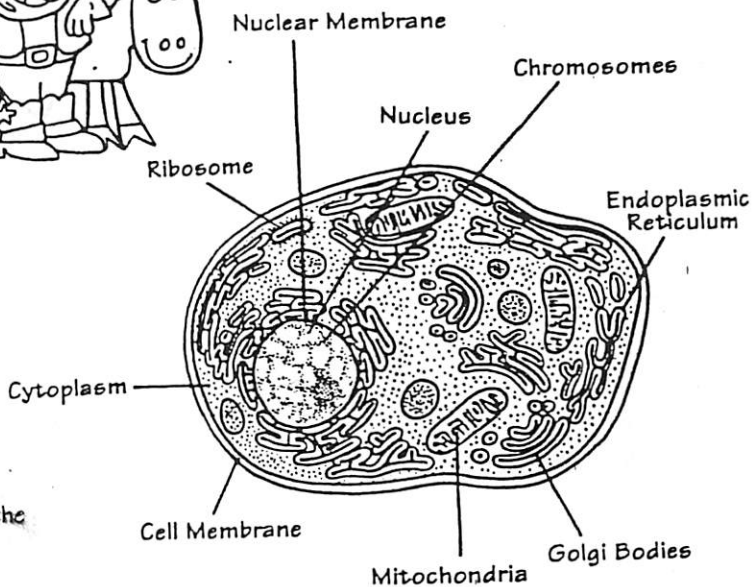
Location: Distributed in the cytoplasm

Function: Stores water and other substances

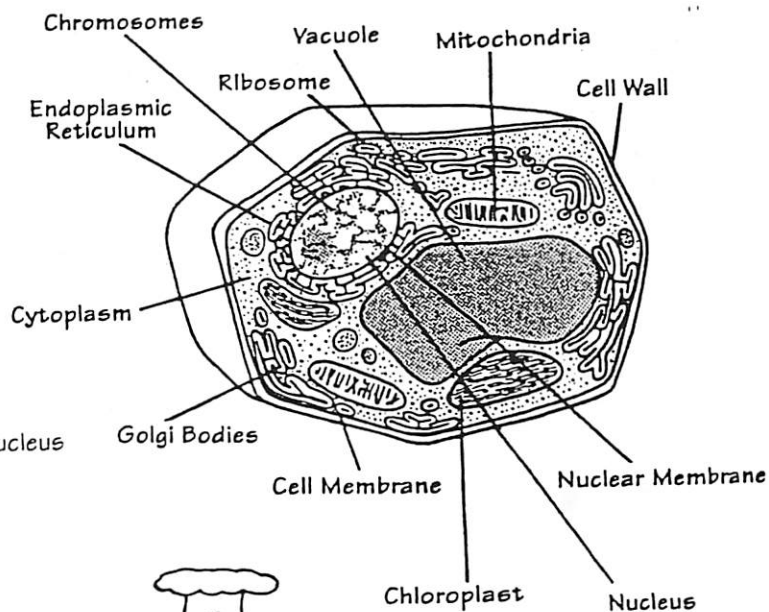
CELL THEORY



Animal Cell



Plant Cell



* Do not expect to see this unless you have electronic microscope.